

**the ratio of an earthworm**  
Sunday, September 2, 2018 from 3-7  
14 Randolph Avenue, Toronto

**the ratio of an earthworm** is a one-day, outdoor exhibition and gathering, co-organized by Patrick Cruz and Larissa Tiggelers. The participating artists directly and indirectly cultivate practices concerned with labour, focused consciousness, and acts of care.

**Hiba Abdallah**



*I'm sorry*, mirror and vinyl, 24 x 24", 2018

**Maria Patricia Abuel**



*pokpok (slut)/eat dick*, Squid Brand fish sauce bottle, diluted fish sauce, Sculpey clay, 12 x 5", 2018

**Ellen Bleiwas**



Protrusion No. 180807, Latex, copper, mirror, 34" x 8.5" x 8.5", 2018

Protrusion No. 180809, Latex, mirror, 20" x 8" x 8", 2018

**Anthony Cooper**



Garden Stakes, dimensions variable, 2018

**Charity Cruz**



tatsulok, wood, acrylic paint, hot glue, size (variable), 2018

**Patrick Cruz**



Scarecrow, mixed media, dimensions variable, 2018

**Jess Eisner & Claudia Rick**



Spider Rock, found materials, various, 2018

**Kat Estacio**



Hinog, mixed media, 8" x 10", 2016



Sa Ibayo at Palingon, audio collage loop, metal bells, sarunay plates, 2018

Kat Estacio is a musician, artist, and enabler of creative culture in Toronto. Her work as a diasporic queer woman of colour occupies the cranny in between the intersections of nostalgia and decolonization. She is also a founding member of Pantayo, a lo-fi R&B gong punk band.

<https://soundcloud.com/kat-estacio>

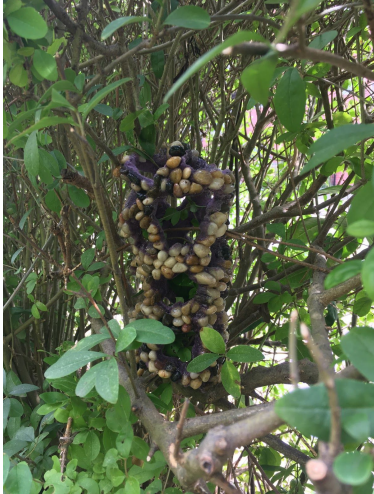
**Shannon Garden-Smith**



Brick IV, Floral foam brick, decorative filler stones, epoxy resin, approx. 9.5"x4.5"x 3", 2017



Brick VI, Lime floral foam brick, decorative filler stones, epoxy resin, approx. 8"x4"x 3", 2018



Brick VII, Lavender floral foam brick, decorative filler stones, epoxy resin, approx. 8"x4"x 3", 2018

**Daniel Griffin Hunt**



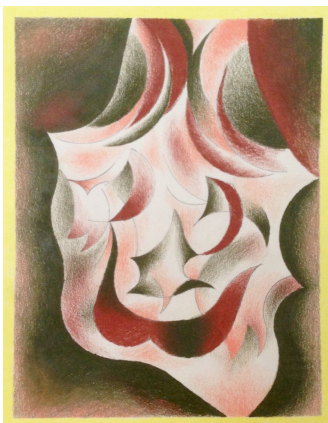
Prototype for a lemon-light, 3d printed lemons (plastic), 8 inches (size variable), 2018

**Aryen Hoekstra**



Twitch, HD video loop, 2011

**Brennan Kelly**



*An Earthen Smile*, Coloured pencil and pencil on paper, 9 x 11 inches, 2018

**Anna Kovler**



*Gnome World*, mixed media, dimensions variable, 2018

**Lauren Lavery**



Garden Stones, cast plaster, varied sizes, 2015-2018

**Alvin Luong**



Algoma Woodland, Inkjet Print, 8 x 10, 2018



**Ella Dawn McGeough**



*Untitled (thought forms\_Alasha), cotton, wax, natural pigment, found materials, dimensions variable, 2018*

**Jet Melencio**



*Underground Radio, small radio, 2018*

**Colin Miner**



Untitled (smoke tray), 2018

**Sara Maston**



Mother Snake, porcelain, 5" x 3.5", 2018

**Kevin Murphy**



P297109 (Mullen's Inch), soil and land deed, 1" x 1" and 5" x 8", 2015/2018

**John Nyman**



Exit, vinyl on window, dimensions variable, 2018

three houseplants, from above, vinyl on window, dimensions variable, 2018

**Cadence Planthara**



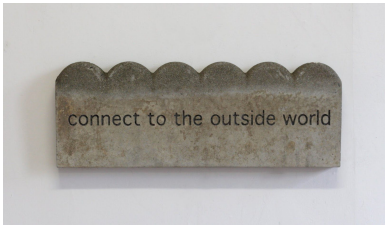
**Jasmine Reimer**



frank and free, concrete, 24"x9"x2", 2016



ever-transforming and in-flux, concrete, 24"x9"x2", 2016



connect to the outside world, concrete, 24"x9"x2", 2016



talk, talk, found concrete, Apoxie-Sculpt, 12"x12"x10", 2015



gullet, found concrete, Apoxie-Sculpt, 12"x8"x4", 2015

**Alex Simons**



*Detritus not Detrius*, election sign frame, other objects and organic material found on the West Toronto Rail Path, (30" x 10"), 2018



*Obstacle for a Brigand*, election sign frame, other objects and organic material found on the West Toronto Rail Path, (30" x 10"), 2018



Maximum Life, objects found on the West Toronto Rail Path, (21"x 12"x5"), 2018

**Tiffany Schofield**



Live at the Penthouse, cast bark & foliage, dimensions variable, 2017

**Larissa Tiggelers**



pick up stix, acrylic paint on found twigs, dimensions variable, 2016

Emma Welch



Study for Dismantling a Fake Flower, pencil crayon on paper, 18"x24", 2018